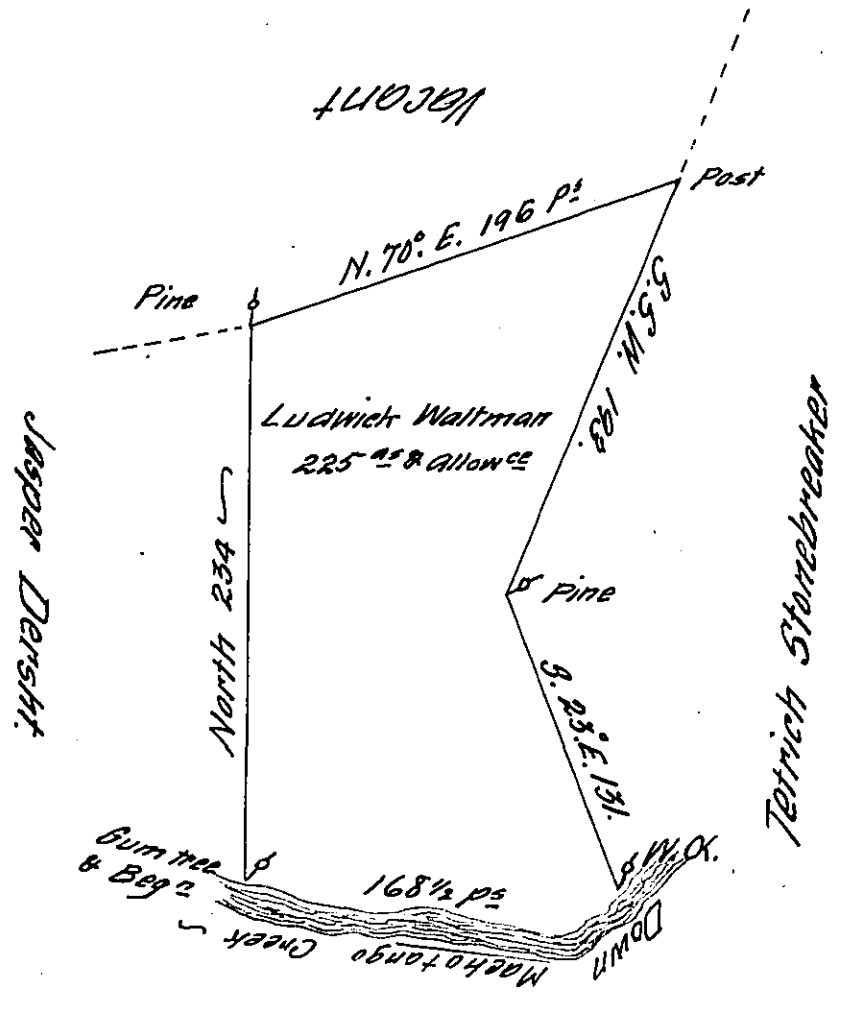


183 - 268



Survey'd for Ludwich Waltman on the 14<sup>th</sup> day of May  
 1773 the above discribed tract of two Hundred  
 Twenty five Acres & Allowance situate on the North side  
 of Machotango Creek in the County of Northumberland  
 by Application of the thirteenth day of March 1769. N<sup>o</sup> 3887

p. Bartrem Galbraith D.S.

To J<sup>r</sup> Lukens Esq<sup>r</sup> }  
 Surv<sup>r</sup> General }

IN TESTIMONY that the above is a copy of the original remaining on file in  
 the Department of Internal Affairs of Pennsylvania, made  
 conformably to an Act of Assembly approved the 16th day of  
 February, 1833, I have hereunto set my Hand and caused  
 the Seal of said Department to be affixed at Harrisburg,  
 this third day of April 1911

*Nancy Houck*  
 Secretary of Internal Affairs.